

Styli and Fixtures Promotion

PRE 1316

2025-2026

Valid from October 1, 2025
until May 31, 2026



Mitutoyo

Styli for CMM *Made in Germany*

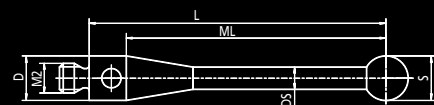
Mitutoyo styli are made to the highest standards to ensure maximum quality and performance. Precision machined components made from the finest quality materials and Grade 5 (DIN 5401:2002) styli balls set the base for high accuracy CMM measurement. Longstanding experience and expertise are used to craft our styli product range with a passion right in the heart of Germany.

M2 Styli

Stylus M2 ruby ball
stainless steel shaft,
base stainless steel



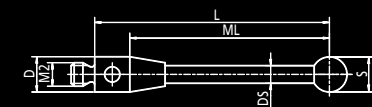
Code	Thread	S mm	L mm	ML mm	Renishaw Equivalent	List Price €	Promotion Price €
K651012	M2	1	10	4,9	A-5000-7806	30,00	24,00
K651014	M2	2	10	6,5	A-5000-7807	21,00	17,00
K651017	M2	4	10	10	A-5000-4154	24,00	19,00
K651019	M2	2	20	15,3	A-5000-3603	25,00	20,00
K651021	M2	3	20	17,5	A-5000-4160	26,00	21,00
K651022	M2	4	20	20	A-5000-4161	27,00	22,00
K651024	M2	6	10	10	A-5000-4156	37,00	30,00



Stylus M2 ruby ball
carbide shaft,
base stainless steel



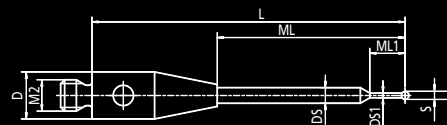
Code	Thread	S mm	L mm	ML mm	Renishaw Equivalent	List Price €	Promotion Price €
K651197	M2	0,5	20	7	A-5003-1345	134,00	107,00
K651248	M2	1	20	7	A-5000-7808	51,00	41,00
K651249	M2	1	20	12,5	A-5003-0033	56,00	45,00
K651251	M2	2	20	15	A-5003-3822	55,00	44,00
K651253	M2	3	20	17	A-5003-0938	58,00	46,00
K651256	M2	1	27,5	20,5	A-5000-8663	71,00	57,00
K651257	M2	1,5	30	22,5	A-5003-0035	60,10	48,00
K651258	M2	2	30	22,5	A-5003-0036	55,00	44,00
K651263	M2	2	40	32,5	A-5003-0037	60,10	48,00
K651322	M2	1	52	37		72,00	58,00



Stylus M2 ruby ball
stepped carbide shaft,
base stainless steel



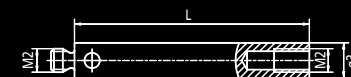
Code	Thread	S mm	L mm	ML mm	ML 1 mm	Renishaw Equivalent	List Price €	Promotion Price €
K651233	M2	0,3	10	4	2,25	A-5000-7800	114,00	91,00
K651235	M2	0,5	20	12	2		113,00	90,00
K651276	M2	0,5	10	4	3	A-5000-7805	103,00	82,00



Extension M2 steel
stainless steel



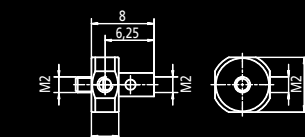
Code	Thread	L mm	D mm	Renishaw Equivalent	List Price €	Promotion Price €
K651038	M2	10	3	A-5004-7585	13,00	10,00
K651039	M2	20	3	A-5004-7586	14,00	11,00
K651040	M2	30	3	A-5004-7591	15,00	12,00
K651041	M2	40	3	A-5004-7611	17,00	14,00



5-way stylus holder M2
stainless steel, rotatable



Code	Thread	L mm	ML mm	D mm	List Price €	Promotion Price €
K651058	M2	7,5	6	7	46,00	37,00



M2 Starter kit



Code	Description	qty.	ø S mm	L mm
K651376	Styli Kit M2 Starter			
K651012	Stylus, stainless steel	1	1	10
K651019	Stylus, stainless steel	1	2	20
K651021	Stylus, stainless steel	1	3	20
K651022	Stylus, stainless steel	1	4	20
K651038	Extension, stainless steel	1		10
K651039	Extension, stainless steel	1		20
K651223	Pin spanner ø 1.2 mm	2		23

Material	Description	qty.	Thread	List Price €	Promotion Price €
K651376	Styli Kit M2 Starter	8	M2	166,00	133,00



Visit our
styli web
catalogue

M3 Styli

Stylus M3 ruby ball
stainless steel shaft,
base stainless steel



Stylus M3 ruby ball
carbide shaft,
base stainless steel



Stylus M3 ruby ball
stepped carbide shaft,
base stainless steel



Extension M3 steel
stainless steel



5-way stylus holder M3
stainless steel, rotatable



Adapter M3 to M2 steel
stainless steel



Styli Kit M3 Starter
Steel styli and extensions



Material	Description	qty.	Thread	List Price €	Promotion Price €
K651380	Styli Kit M3 Starter	9	M3	236,00	189,00

Code	Thread	S mm	L mm	ML mm	Renishaw Equivalent	List Price €	Promotion Price €
K651146	M3	1	21	4	A-5000-3551	34,00	27,00
K651147	M3	2	21	8	A-5000-3552	29,00	23,00
K651148	M3	3	21	12	A-5000-3553	30,00	24,00
K651151	M3	4	31	27	A-5000-3554	32,00	26,00
K651152	M3	5	31	31	A-5000-7648	35,00	28,00

Code	Thread	S mm	L mm	ML mm	Renishaw Equivalent	List Price €	Promotion Price €
K651111	M3	0,5	20	2	A-5000-7632	131,00	105,00
K651329	M3	1	22	12		64,00	51,00
K651330	M3	1	32	25		61,00	49,00
K651119	M3	1,5	30	22,5	A-5003-0051	60,10	48,00
K651109	M3	2	20	14,8		43,00	34,00
K651120	M3	2	30	22,5	A-5003-0052	55,00	44,00
K651127	M3	2	40	32,5	A-5003-0053	60,10	48,00
K651133	M3	4	50	46	A-5003-0061	64,40	52,00

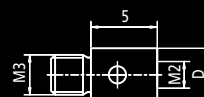
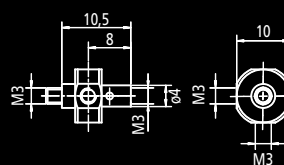
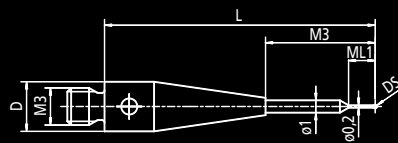
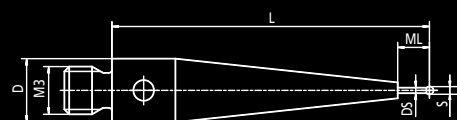
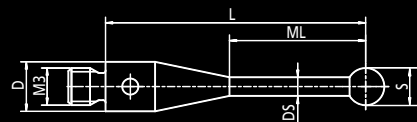
Code	Thread	S mm	L mm	ML mm	ML 1 mm	Renishaw Equivalent	List Price €	Promotion Price €
K651106	M3	0,3	21,9	8,85	2,16	A-5555-0273	48,00	38,00
K651105	M3	0,5	21,8	8,75	2,25		64,00	51,00

Code	Thread	L mm	D mm	Renishaw Equivalent	List Price €	Promotion Price €
K651156	M3	10	4	A-5004-7609	9,50	8,00
K651157	M3	20	4	A-5004-7583	10,50	8,00
K651158	M3	30	4	A-5555-0286	11,60	9,00
K651159	M3	35	4	A-5004-7584	16,00	13,00

Code	Thread	L mm	ML mm	D mm	Renishaw Equivalent	List Price €	Promotion Price €
K651169	M3	13	9	10	A-5000-7610	50,40	40,00

Code	Thread	L mm	D mm	Renishaw Equivalent	List Price €	Promotion Price €
K651170	M3	5	4	A-5004-7592	9,50	8,00

Please, note that in case a short ML length vs. a high total length L is listed, the base extends to the long conical shape that is visible in the drawing below.



Code	Description	qty.	ø S mm	L mm
K651380	Styli Kit M3 Starter			
K651146	Stylus, stainless steel	1	1	21
K651147	Stylus, stainless steel	1	2	21
K651148	Stylus, stainless steel	1	3	21
K651151	Stylus, stainless steel	1	4	31
K651152	Stylus, stainless steel	1	5	31
K651157	Extension, stainless steel	1		20
K651159	Extension, stainless steel	1		35
K651223	Pin spanner ø 1.2 mm	2		

Visit our CMM
fixtures web
catalogue



Fixtures for CMM

- Compatible with any CMM
- Ready for the Pallet Receiver System PRS for exact repositioning
- Significant enhancement of the quality control process

Material	pcs.	Base plate	List Price €	Promotion Price €
K551048	59	250 x 250 mm	1.095	876,00
K551549	98	500 x 400 mm	1.979	1.583
K551217	5	PRS plate	1.193	954,00

eco-fix Kit S

Part No. K551048

- 59-piece modular clamping kit
- Includes 250 x 250 mm base plate



eco-fix Kit L

Part No. K551549

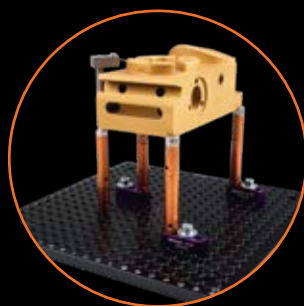
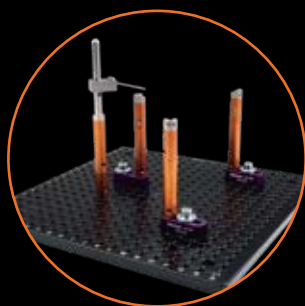
- 98-piece modular clamping kit
- Includes 500 x 400 mm base plate



Pallet Receiver System Plate

Part No. K551217

- Handles and spheres for the eco-fix pallet included
- Suits 250 mm and 500 mm base plates



Ultra-flexible CMM fixturing

- Quick change of the base dimension
- Fast repositioning and set-up

Material	pcs.	Base plate	List Price €	Promotion Price €
K551279	31	ca. 800x 500 mm	1.283	1.026

eco-fix rail Kit S

Part No. K551279

- 31-piece modular clamping kit
- Base adjustable up to approx. 800 x 500 mm



FixtureBuilder Software

Optimum utilisation of the eco-fix kits on offer

The free of charge software FixtureBuilder enables the user to easily plan and set up his CMM fixture in just a few minutes. Repeatable fixturing has never been easier and at a better price performance ratio. FixtureBuilder is a software tool that allows users to create virtual clamping fixtures quickly and easily.

FixtureBuilder advantages

- Fixture building by mouse click
- Parts list with material overview
- Documented structure
- Assembly instruction
- Multiple data formats for file data import and export
- Load the fixture to your CMM software

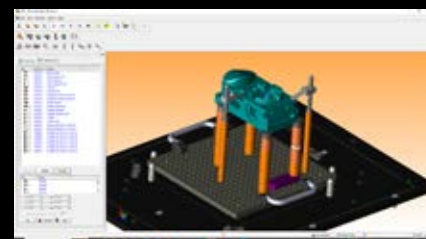
Free
download



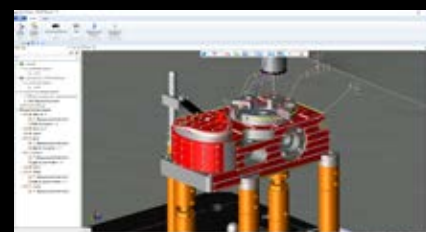
Building
process



Finished
fixture



Fixture and part
transferred to CMM
software



Fixtures for Vision Measuring Machines



opti-fix Kit 202

Part No. K551340

- 29-piece modular clamping kit
- For 202 and 302 frame machines
- Clamping of parts on the machine glass
- Clamping of rotationally symmetric parts

opti-fix Kit 404

Part No. K551341

- 49-piece modular clamping kit
- For 404 frame
- Clamping of parts on the machine glass
- Clamping of rotationally symmetric parts
- Clamping with vises

- Magnetic holders are required, to attach the fixture to the machine frame.
- See the tables below

Model	frame	Part no. X	qty. axis	Part no. Y	qty. axis
QV-Active	202	K551316	2	K551063	2
QV-Active	404	K551063	2	K551316	2
QV	302	K550989	2	K551063	2
QV	404	K550989	2	K550989	2

Material	pcs.	Base plate	List Price €	Promotion Price €
K551340	29	250 x 250 mm	1.727	1.382
K551341	49	500 x 400 mm	3.498	2.798

Material	Description	List Price €	Promotion Price €
K550989	Magnetic holder L = 35 H = 27,5	186,00	149,00
K551063	Magnetic holder L = 25 H = 27,5	181,00	145,00
K551296	Magnetic holder L = 35 H = 41,5	175,00	140,00
K551316	Magnetic holder L = 20 H = 27,5	181,00	145,00

Kaizen for everybody

MiSTAR 555 CNC

Complete kit bundle from

49.000 €*

UPGRADE TO PRO-PRODUCTIVITY.

Fits every budget.
Fits every shopfloor.
Fits every condition.

Fits for every job. Fit for every challenge.

* For further details, please contact your local Mitutoyo Sales organisation.



MiSTAR optimised accessories

eco-fix clamping system kits

K551048 eco-fix kit S 250 x 250 mm base plate
K551549 eco-fix kit L 500 x 400 mm base plate

- Modular fixturing system
- Easily reproducible structures
- Practice-oriented and economical
- Ensures optimal accessibility
- Universal set up



K551217 Pallet Receiver Plate

- 3-point positioning
- Only 1x datuming of the same part required
- Enables semi-automatic serial measurements
- Easy and safe repositioning on the CMM
- Handles and spheres for the eco-fix pallet included
- Suits 250 mm and 500 mm base plates



MiSTAR Styli kit

- High quality styli kit
- Optimised for MiSTAR application
- Practice-oriented and economical
- For scanning and touch probe application



Material	Description	qty.	Thread	List Price €	Promotion Price €
K651445	Styli Kit M2/M3 „MiSTAR“ Ruby	14	M2/M3	857,00	686,00

Code	Description	qty.	ø S mm	L mm
K651445	Styli Kit M2/M3 MiSTAR			
K651256	Stylus, tungsten carbide	1	1	27,5
K651258	Stylus, tungsten carbide	2	2	30
K651435	Stylus SiN, tungsten carbide	1	3	40
K651347	Stylus, CFC	5	4	50
K651101	Knuckle/swivel joint, stainl. steel	1		17,2
K651409	Adapter, CFC	1		30
K651058	5-way stylus holder, rotatable	1		7,5
K651223	Pin spanner ø 1.2 mm	2		23

Precision matches perfection

QUICK VISION ACTIVE CNC SERIES

QV 202 PRECISION BUNDLE

29.999 €*

- Get insight into your quality with
- Excellent optics
- Powerful QVPAK software
- High efficiency

* For further details, please contact your local Mitutoyo Sales organisation.

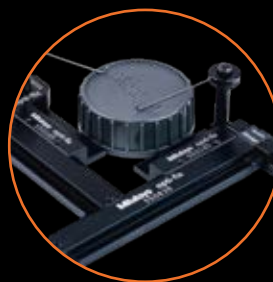
QV-Active optimised accessories

opti-fix clamping system kits

202 frame kit K551340

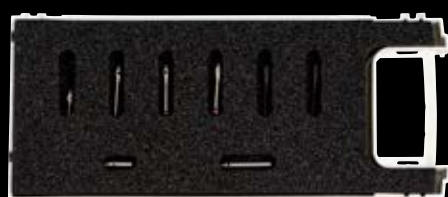
404 frame kit K551341

- The toothed rails allow measurements with transmitted light
- Parts for building a profile angle
- Clamping of rotationally symmetrical parts
- Clamp items directly on the glass of the machine
- The opti-fix vise included for further clamping options



M2 Starter kit

- Cost effective starter kit
- Optimised for touch probe application



Material	Description	qty.	Thread	List Price €	Promotion Price €
K651376	Styli Kit M2 Starter	8	M2	166,00	133,00

Code	Description	qty.	ø S mm	L mm
K651376	Styli Kit M2 Starter			
K651012	Stylus, stainless steel	1	1	10
K651019	Stylus, stainless steel	1	2	20
K651021	Stylus, stainless steel	1	3	20
K651022	Stylus, stainless steel	1	4	20
K651038	Extension, stainless steel	1		10
K651039	Extension, stainless steel	1		20
K651223	Pin spanner ø 1.2 mm	2		23

Action valid from June 1, 2025 until July 31, 2025. We reserve the right to make technical changes and developments; these prices only apply to business customers; all prices are understood to be net prices in EURO + VAT - further information is obtainable from www.mitutoyo.eu. Delivery and prices of products offered herein are valid while supplies last. Technical changes, mistakes, and printing errors excepted.

Coordinate Measuring Machines



Vision Measuring Systems



Form Measurement



Optical Measuring



Sensor Systems



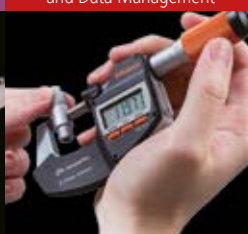
Test Equipment and Seismometers



Digital Scale and DRO Systems



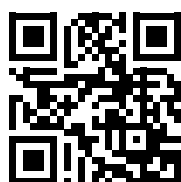
Small Tool Instruments and Data Management



Whatever your challenges are, Mitutoyo supports you from start to finish.

Mitutoyo is not only a manufacturer of top-quality measuring products, but also one that offers qualified support for the lifetime of the equipment backed up by comprehensive services, ensuring your staff can make the very best use of the investment.

Apart from the basics of calibration and repair, Mitutoyo offers product and metrology training, as well as IT support for the sophisticated software used in modern measuring technology. We can also design, build, test, and deliver bespoke measuring solutions and even, if deemed cost-effective, take your critical measurement challenges in-house on a sub-contract basis



Find additional product literature and our complete catalog here.

www.mitutoyo.eu

Mitutoyo

Note: Product illustrations are without obligation. Product descriptions, in particular any and all technical specifications, are only binding when explicitly agreed upon.

MITUTOYO, ABSOLUTE, DIGIMATIC, OPTOEYE and U-WAVE are either registered trademarks or trademarks of Mitutoyo Corp. in Japan and/ or other countries/regions. Opti-fix is a registered trademark of KOMEI Industrielle Meßtechnik GmbH. Excel, Microsoft, and Windows are either registered trademarks or trademarks of Microsoft Corporation in the United States and/ or other countries. Thiokol is a registered trademark of TORAY FINE CHEMICALS Co., Ltd. TÜV is a registered trademark of (among other holders) TÜV Rheinland AG. YouTube is a registered trademark of Google Inc. Other product, company and brand names mentioned herein are for identification purposes only and may be the trademarks of their respective holders

Mitutoyo Europe GmbH

Borsigstraße 8-10
41469 Neuss

Tel. +49 (0) 2137-102-0

info@mitutoyo.eu
www.mitutoyo.eu